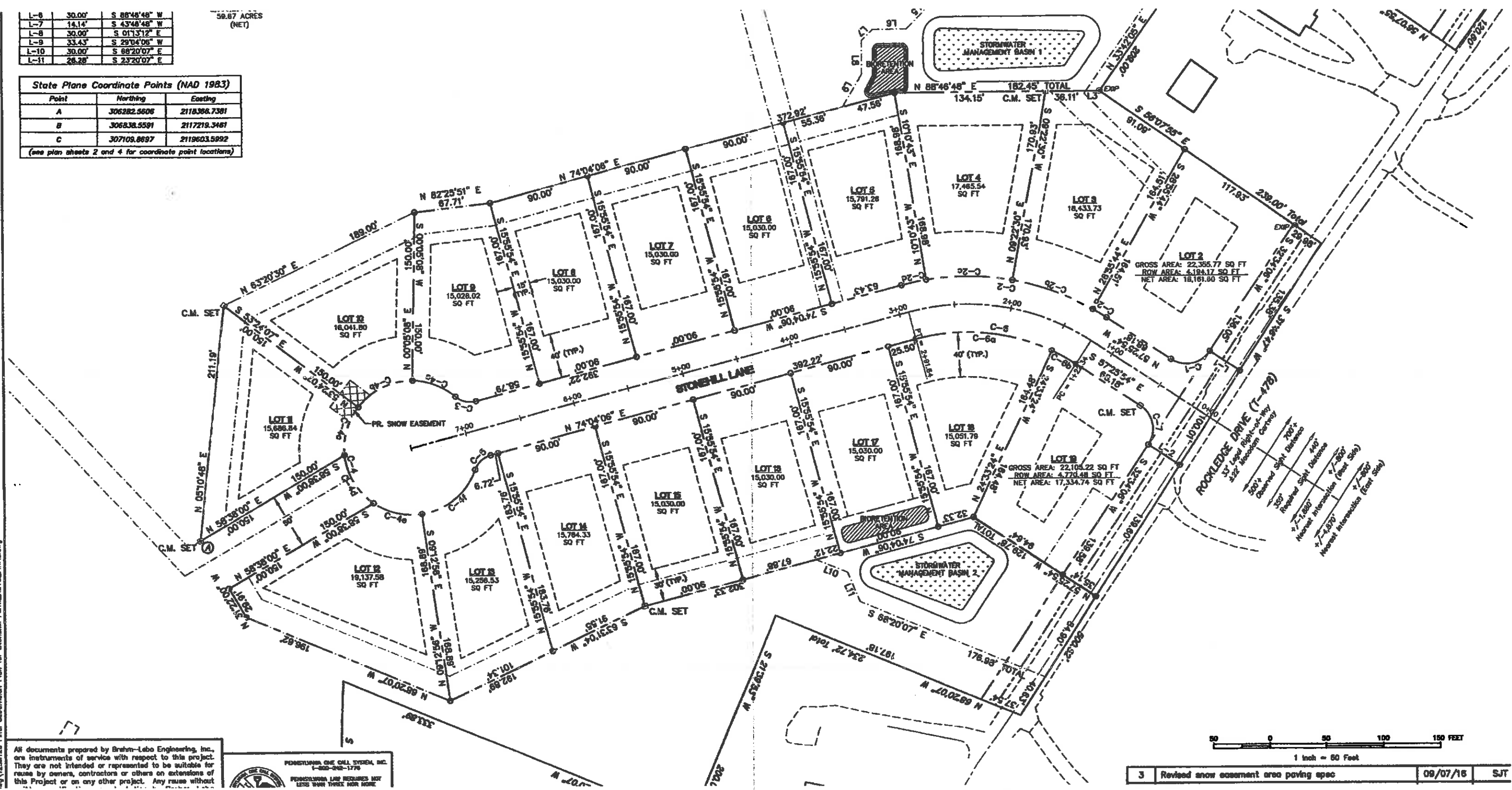


L-6	30.00'	S 88°46'48" W
L-7	14.14'	S 43°46'48" W
L-8	30.00'	S 01°31'12" E
L-9	33.43'	S 29°04'06" W
L-10	30.00'	S 88°20'07" E
L-11	28.28'	S 23°20'07" E

59.87 ACRES
(NET)

State Plane Coordinate Points (NAD 1983)		
Point	Northing	Easting
A	306282.5606	2118386.7381
B	306838.5591	2117219.3481
C	307109.8897	2119603.5992

(see plan sheets 2 and 4 for coordinate point locations)



All documents prepared by Braun-Loeb Engineering, Inc., are instruments of service with respect to this project. They are not intended or represented to be suitable for reuse by owners, contractors or others on extensions of this Project or on any other project. Any reuse without

FORSTUNN ONE CALL SYSTEM, INC.
1-800-368-1776
FORSTUNN LAW REQUIRES NOT LESS THAN THREE HOURS

3 Revised snow easement area paving spec 09/07/16 SJT